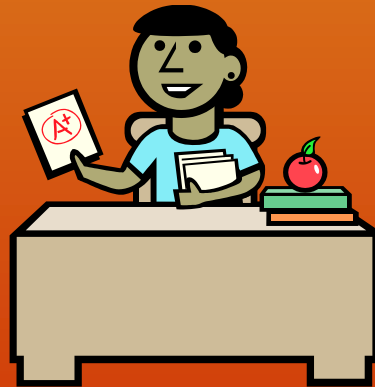


Classroom vs. Office Managed Behaviors



Classroom vs. Office Managed Behaviors

- School #33 faculty concluded which types of behaviors are to be managed by a teacher's classroom system and which behaviors should be sent to the office.
- A rubric was developed to create a standardized method of managing student behavior.
- The rubric is displayed as an escalating scale of problem behaviors.

Classroom vs. Office Managed Behaviors

- In order to monitor progress of our universal system, we need to have accurate data collection.
- We will be now be able to examine office discipline referral rates and patterns to ask:
 - How often are problem behavior events occurring?
 - Where are they happening?
 - What types of problem behaviors?
 - When are the problems occurring?
 - Who is contributing?

How was the rubric developed?

- 1. Professional Development (Winter 2020)-** At a PD held in the winter of last year, the staff was split into small groups. Each group produced a T-chart listing behaviors they believed should be handled by the teacher and which behaviors should be handled by administration.
- 2. The SWPBIS committee compiled all of these charts and developed the Classroom vs. Office Managed Behaviors Rubric.**

Classroom Managed

Level 1 & Level 2

Classroom Managed Behaviors	
1	2
Disruptive to Self	Disruptive to Others
<ul style="list-style-type: none"> • Brief, low intensity failure to respond to adult requests 	<ul style="list-style-type: none"> • Failure to respond to adult requests
<ul style="list-style-type: none"> • Out of seat 	<ul style="list-style-type: none"> • Out of seat-disrupting class
<ul style="list-style-type: none"> • Inappropriate use of own materials, electronic devices 	<ul style="list-style-type: none"> • Inappropriate use of classroom materials, electronic devices
<ul style="list-style-type: none"> • Refusal to participate in instructional tasks 	<ul style="list-style-type: none"> • Disruption of instructional process
<ul style="list-style-type: none"> • Tardy 	<ul style="list-style-type: none"> • Minor inappropriate language-low intensity, not directed
	<ul style="list-style-type: none"> • Minor Theft
	<ul style="list-style-type: none"> • Cheating/lying

- Level 1 & 2 Offenses should be handled by a teacher's classroom management system.
- Your classroom system explicitly provides necessary classroom procedures, rules, expectations, consequences, and rewards that help students become more self-directed in their behavior.

Office Managed Behaviors

Level 3 & 4

Potentially Office Managed

- These behaviors are more severe and may require office discipline referrals.
- Remember- ALL suspected bullying occurrences require a bullying referral. It is up to administration to conduct the investigation. You are required by law to report.

Office Managed Behaviors	
3 Potentially Office Managed	4 Office Managed
<u>Defiance/disrespect/Insubordination/non-compliance</u>	<u>Defiance/disrespect/Insubordination/non-compliance</u>
<u>Skip Class</u> <ul style="list-style-type: none"> • Leaving class-in sight of CRT 	<u>Skip Class</u> <ul style="list-style-type: none"> • Leaving classroom without permission-out of sight
<u>Disruption</u> <ul style="list-style-type: none"> • Inappropriate use of classroom materials or electronic devices-with potential harm to others 	<u>Weapons</u> <ul style="list-style-type: none"> • Possession or use of a weapon or item used as a weapon • Bomb threats
<u>Disruption</u> <ul style="list-style-type: none"> • Pushing, shoving, & play-fighting 	<u>Fighting</u> <p><u>Physical Aggression</u></p> <ul style="list-style-type: none"> • Actions that cause or could cause serious harm
<u>Abusive/inappropriate language/profanity</u> <ul style="list-style-type: none"> • Minor inappropriate language-low intensity & directed 	<u>Abusive/inappropriate language/profanity</u> <ul style="list-style-type: none"> • Inappropriate language-high intensity
<u>Property Damage/Theft</u> <ul style="list-style-type: none"> • Damage to school or student property 	<u>Property Damage/Theft</u> <ul style="list-style-type: none"> • Irreversible damage to school property
<u>Harassment/Tease/Taunt</u> <ul style="list-style-type: none"> • Minor Bullying 	<u>Harassment/Tease/Taunt</u> <ul style="list-style-type: none"> • Serious Threats, Sexual Harassment
	<ul style="list-style-type: none"> • Chronic Level 3 Offenses