

Program - Automotive Technology

JumpStart Pathway Transportation, Distribution and Logistics,

Courses: Auto Tech I, II, III, IV

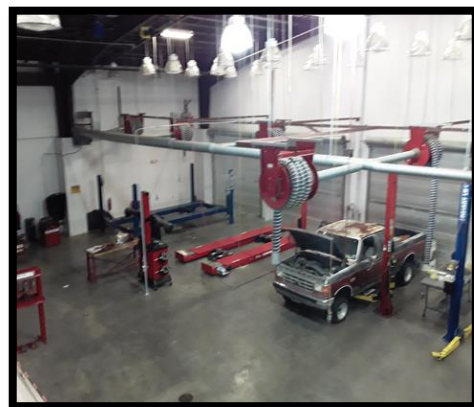
Grades: 11,12

1 year program – 4 credits (2semesters) or

2 year program – 8 credits (4 semesters)

Dual Enrollment with Delgado Community College

WOULD YOU LIKE TO LEARN MORE ABOUT MAINTAINING YOUR CAR OR TRUCK? HAVE YOU THOUGHT ABOUT ENTERING THE WORK FORCE AS AN AUTOMOTIVE REPAIR TECHNICIAN? OR MAYBE YOU PLAN ON BECOMING AN ENGINEER AND LIKE TO SEE HOW THINGS WORK? SIGN UP FOR CUILLIER'S AUTOMOTIVE TECHNOLOGY PROGRAM. YOU CAN PARTICIPATE FOR 1 SEMESTER OR FOR 2 YEARS.



Program Description:

Students should expect course work to include direct classroom instruction, independent work on online ASE modules, certification exams, and live work in lab on cars and trucks. The Automotive Technology Program offers students an opportunity to prepare for a career in the automotive industry as an automotive technician. The course is designed to meet the standards set by the [National Institute for Automotive Service Excellence \(ASE\)](http://www.nate.edu). ASE Certification is recognized nationwide. Course work includes the study of automotive technician careers, technical skills, safety, and the operation, diagnosis and troubleshooting of brakes, suspension and steering, engine performance and electricity/electronics. Students will practice front-end alignment and engine tune-up as they experience hands-on training in computer diagnostic programs, automotive tools and equipment. Our goal is to help each student to progress to the point where they are qualified to enter the Automotive Repair industry as an Entry Level Technician.

Automotive Technicians and Mechanics median pay was \$42,090 per year \$20.24 per hourearned in 2019.

www.bls.gov



Earn One or More ASE Industry Based Certifications:

- Automobile Service Technology • Automotive Transmission and Transaxle • Brakes • Electrical/Electronic Systems • Engine Performance • Engine Repair • Heat and Air Conditioning • Maintenance and Light Repair • Manual Drivetrain and Axles • Steering and Suspension

1 Certification = **Basic Statewide Credential**

3 certifications = **Advanced Statewide Credential**

Additional certification earned: S/P2 Automotive Service Safety &

Pollution Prevention (Basic)

Related Careers

University: Automotive and Logistics Engineer; Mechanical Engineer

Community College: Aviation Technician, Automotive Technician,

Information for this page compiled from <https://www.louisianabelieves.com/resources/library/jump-start-graduation-pathways>
[Automotive Service Technicians and Mechanics](#) : Occupational Outlook Handbook: : U.S. Bureau of Labor Statistics (bls.gov)