

# Calendar, Caregiver, and Staff Survey Results

July 2020



# Survey Results

- Calendar Survey Results
- Caregiver Survey Results
- Staff Survey Results

# Calendar Survey

- Our Calendar Committee reconvened in July 2020 to discuss possible amendments to the academic calendar. The committee tried to achieve the following goals:
  - Begin school as stated on our approved calendar, or as close as possible
  - Provide teachers and leaders with additional days before students report to implement additional safety guidelines and prepare for multiple methods of instruction delivery
  - Provide as many instructional minutes as possible given the possibility of a hybrid or virtual instructional model
  - Provide families with adequate notice if the calendar must be amended
- We shared two calendar amendment options for stakeholders to vote via an online survey.
- The survey window was July 7-July 11.

# Calendar Survey Results

- Based on 10,305 responses, 68% of stakeholders voted for option B.
- Pending JP School Board approval on July 15, the key changes from the previously approved academic calendar would be:
  - Push the first day for 1-12<sup>th</sup> students from August 6 to August 12
  - Push the first day for PK-K students from August 13-14 to August 17-18
  - Add four additional teacher prep days to the beginning of the year
  - Recover instructional minutes:
    - eliminate September 7 as a PD day
    - make September 11 a teacher PD day/no school for students
    - eliminate November 2 as a Parent/Teacher Conference/ PD day
      - *conferences will be available virtually by appointment*
    - change December exam days to full days
    - eliminate March 22 as a Parent/Teacher Conference/PD day
      - *conferences will be available virtually by appointment*

# PENDING BOARD APPROVAL: Proposed Calendar Shifts

Dates	Previously Approved Calendar	Proposed New Calendar
First Day of School for Faculty and Teachers	August 3	August 3
First Day of School Grades 1-12	August 6	August 12
First Day of School Grades PK/K	Aug 13-14	August 17-18
Teacher Professional Development Day	September 7	September 11
Fall Break	October 12-13	October 12-13
Thanksgiving Break	November 23-27	November 23-27
Winter Break	December 21-January 1	December 21-January 1
Mardi Gras Holiday	February 15-19	February 15-19
Spring Break	April 2-6	April 2-6
Last Day for Students	May 21	May 21
Records Day/Last Day for Teachers	May 24	May 24

# Survey Results

- Calendar Survey Results
- Caregiver Survey Results
- Staff Survey Results

# Caregiver Survey Results Overview

- Survey purpose was to continue assessing the needs and intentions of caregivers as we plan for a *Start Strong Jefferson*
- Survey was open June 24-July 2
- Online and anonymous

# 7,858 Caregivers Responded

Location	Responses
Haynes Academy	423
Patrick Taylor Academy	358
Riverdale High School	264
John Ehret High School	251
Metairie Academy	242
Airline Park Academy	234
Thomas Jefferson	192
Ray St. Pierre Academy	189
Gretna No.2 Academy	188
C.T. Janet Elementary School	179
J.C. Ellis School	166
Chateau Estates School	162
Harahan School	161
L.W. Higgins High School	150
Helen Cox High School	148
Rudolph Matas School	146
Fisher Middle-High School	140
Grace King High School	138
Allen Ellender School	135
Leo Kerner Elementary School	134
Paul J. Solis Elementary School	134
East Jefferson High School	129

Estelle School	126
Jefferson School	125
West Jefferson High School	122
Woodland West School	114
Marie Riviere Elementary School	112
Alfred Bonnabel High School	108
Ella C. Pittman Elementary School	106
Alexander School	104
T.H. Harris Middle School	104
Hazel Park School	102
Adams Middle School	99
L.H. Marrero Middle School	99
Greenlawn Elementary School	93
Bridgedale Elementary School	92
Geraldine Boudreaux School	92
Ella Dolhonde School	91
Bissonet Plaza School	90
Harold Keller Elementary School	90
Audubon School	88
J.D. Meisler Middle School	87
Lincoln School for the Arts	86
Tom Benson School	85
Emmett Gilbert School	84

Harry S. Truman Middle School	83
Phoebe Hearst Elementary School	80
Clancy Maggiore Elementary	78
Judge L. Collins Elementary	70
Ruppel Academie Francaise	67
Joshua Butler Elementary School	66
Gretna Middle School	62
Shirley Johnson Gretna Park	62
Alice Birney Elementary School	55
Walter Schneckeburger	53
Terrytown Elementary School	51
Green Park Elementary School	50
Stella Worley Middle School	50
Livaudais Middle School	47
McDonogh 26 Elementary School	43
Isaac G. Joseph Elementary School	42
Cherbonnier School	39
Mildred Harris Elementary School	39
George Cox Elementary School	37
Washington Elementary School	36
Woodmere School	36
Bunche Elementary School	35
William Hart Elementary School	32
G.T. Woods Elementary School	28
Bonella St. Ville Elementary	24
Grand Isle School	20
Frederick Douglass Community	7
Strehle Community	3





# We asked caregivers about their instructional school model preference.

Which of the following statements reflects your plans for schooling in JP Schools next year?

Traditional/Hybrid	59%
100% Virtual	39%
Will not return to JP Schools	2%

# We asked caregivers about their child's access to a device and internet.

Device and Connectivity	
I have a working computer <b>and</b> internet service.	70%
I <b>do not</b> have a working computer in the home but I have internet.	24%
I <b>do not</b> have a working computer or internet service.	4%
I have a working device but <b>do not have</b> internet service in the home .	2%

# We asked caregivers about their transportation preference.

I will use JP transportation this school year.	28%
I will <b>not</b> use JP transportation this school year.	72%

# Survey Results

- Calendar Survey Results
- Caregiver Survey Results
- Staff Survey Results

# Staff Survey Results Overview

- Purpose of survey is to continue assessing the needs of our staff as we plan for a Start Strong Jefferson
- Survey was open June 24-July 3
- Online and anonymous

# 1,853 Staff Members Responded

Location	Responses
Central Office	108
Grace King High School	60
Clancy Maggiore Elementary School	54
Geraldine Boudreaux School	43
Alfred Bonnabel High School	42
West Jefferson High School	39
John Ehret High School	38
Shirley Johnson Gretna Park	36
Estelle School	36
J.D. Meisler Middle School	35
Phoebe Hearst Elementary School	34
Allen Ellender School	34
Bridgedale Elementary School	33
Bissonet Plaza School	33
Haynes Academy	33
Riverdale High School	32
Jefferson School	32
Rudolph Matas School	31
Chateau Estates School	31
East Jefferson High School	30
Emmett Gilbert School	30
C.T. Janet Elementary School	28
Harold Keller Elementary School	28
Hazel Park School	28

Bunche Elementary School	28
Alexander School	28
J.C. Ellis School	27
L.W. Higgins High School	26
Paul J. Solis Elementary School	26
Harahan School	25
T.H. Harris Middle School	25
Terrytown Elementary School	25
Tom Benson School	25
Audubon School	25
Patrick Taylor Academy	24
Harry S. Truman Middle School	24
Greenlawn Elementary School	24
Joshua Butler Elementary School	23
Ray St. Pierre Academy	22
Green Park Elementary School	21
Stella Worley Middle School	21
Gretna Middle School	21
Adams Middle School	21
Leo Kerner Elementary School	20
Marie Riviere Elementary School	20
Woodland West School	20
Isaac G. Joseph Elementary School	20
George Cox Elementary School	20
Mildred Harris Elementary School	19

Lincoln School for the Arts	19
Helen Cox High School	19
Woodmere School	18
Fisher Middle-High School	18
Ella C. Pittman Elementary School	18
Alice Birney Elementary School	17
Walter Schneckenger Elementary	16
Metairie Academy	16
Cherbonnier School	16
Gretna No.2 Academy	16
William Hart Elementary School	14
Airline Park Academy	14
Judge L. Collins Elementary School	14
Grand Isle School	14
Washington Elementary School	13
Ella Dolhonde School	13
McDonogh 26 Elementary School	13
L.H. Marrero Middle School	13
G.T. Woods Elementary School	12
Thomas Jefferson	11
Strehle Community	11
Bonella St. Ville Elementary School	10
Livaudais Middle School	10
Ruppel Academie Francaise	5
Douglass/Westbank Community	5



# Staff Professional Development and Support

- 84% of staff attended a professional development or training session.
- 65% of staff thought the training they received was useful.
- In terms of priority, staff wants additional support and information about:
  - Technology (Google Classroom/Google Meets)
  - Instruction (lesson planning & pacing)
  - Mental/emotional health
  - Childcare

# The majority of staff felt supported during school closures.

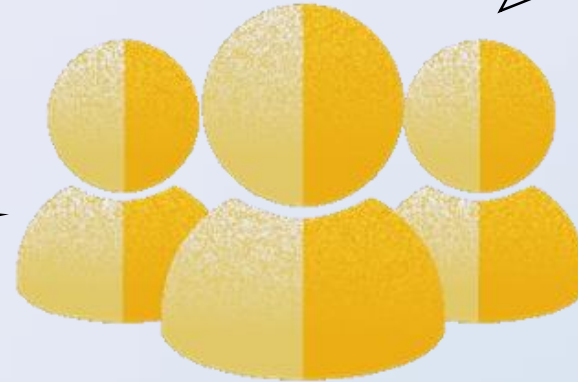
Statement	% Agree
My leaders gave me the professional support I needed.	80%
The district provided information on how to access emotional support resources.	81%
I understood my role.	83%
I knew to whom I should have gone when I needed help.	84%
I received clear expectations regarding my role from my immediate supervisor.	80%
I received consistent messaging about the district's response.	86%



# Staff noted what support would help them be successful.

"Spacing among everyone, mandating masks, temperature checks, sending home sick people (children and staff)."

"Continue social distancing, face masks, and hand washing techniques."



"Virtual teaching would be best for me."

"Smaller groups of children."

"Make sure every student wears their face masks including as they are traveling between classes."

"Antibacterial spray and hand sanitizer to be provided."

# We asked staff about childcare.

	Yes	No
Do you have concerns about child care upon returning to work?	24%	76%

## Staff had specific childcare concerns about:

- child supervision while parents at work
- lack of daycare
- school start/dismissal times
- at-risk family members who supervise children before/after school

# We asked staff about additional safety measures.

	Yes	No
Do you have any concerns about undergoing daily temperature checks or wearing required personal protective equipment?	33%	67%

# What's next?

- ❑ Caregivers can register for the *Virtual Jefferson* option beginning July 10 at [jpschools.org/virtualjefferson](http://jpschools.org/virtualjefferson).
- ❑ Caregivers can update their contact information by logging into the Student Progress Portal in JCampus. If you do not have login information, please contact your child's school for assistance.
- ❑ New caregivers to JP Schools can register online beginning July 20 by visiting our website at [jpschools.org](http://jpschools.org).
- ❑ Caregivers who do not have internet access in the home and are eligible for low-cost at-home internet service from Cox Communications can visit [jpschools.org/internetoffer](http://jpschools.org/internetoffer).